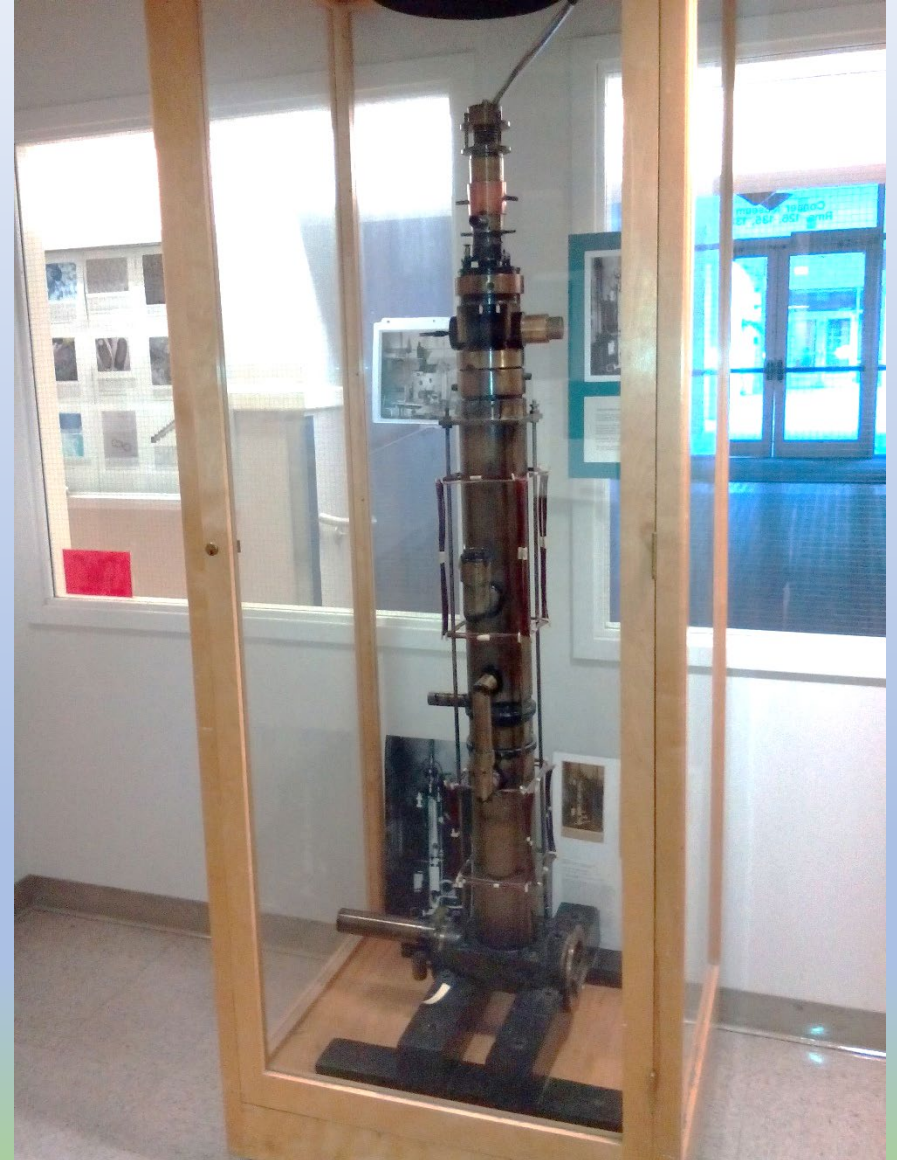


Franceschi Microscopy and Imaging Center (FMIC)

- Established 1962
- Core lab and department
- We teach 2 classes every semester (EMIC 586/587)
- Over the last 10 years we taught ~ 900 students, postdocs and faculty in the operation of high-end microscopy equipment.
- First electron microscope in America built at WSU displayed in entrance hall

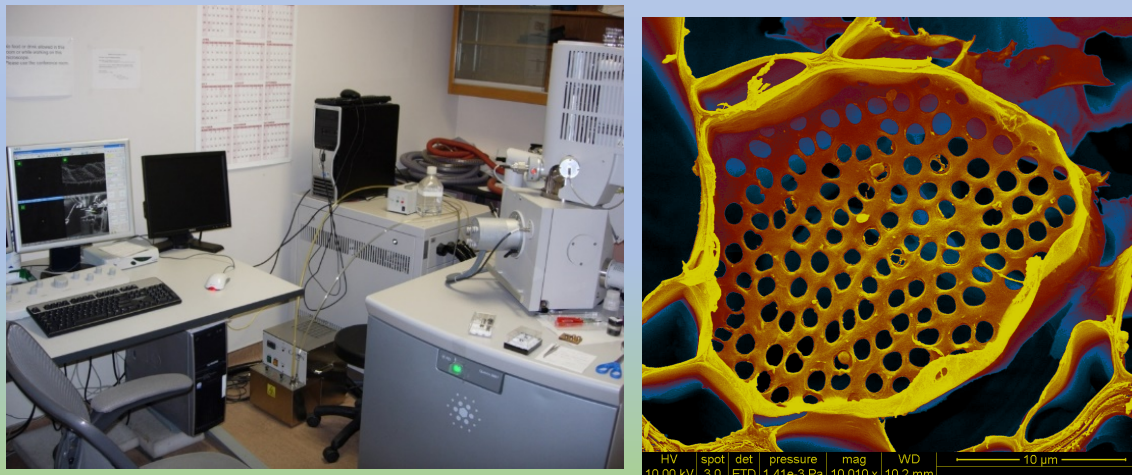
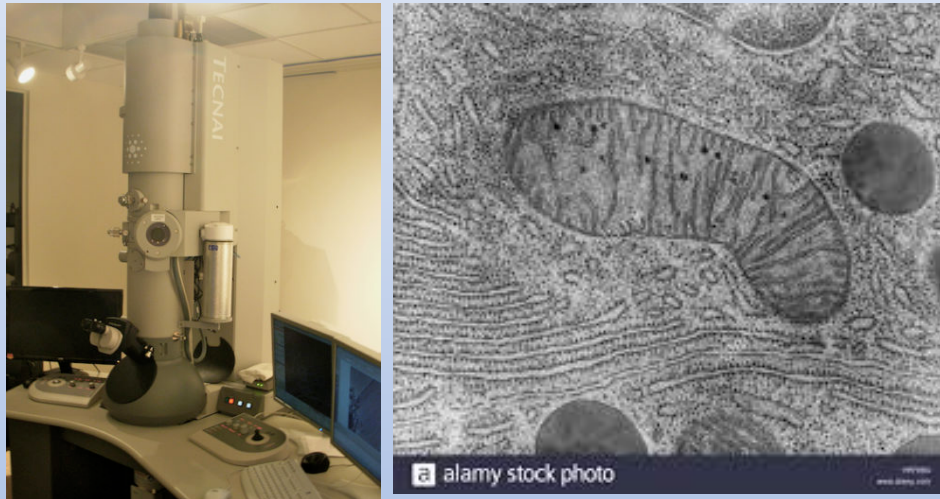
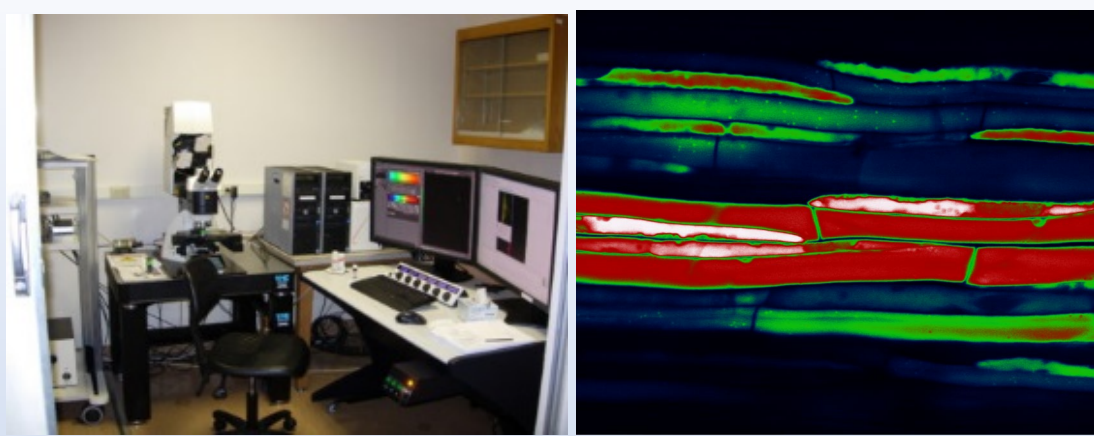


Instruments:

- SP5 Confocal
- SP8 Confocal

- T-20 TEM

- Tescan SEM
- Quanta SEM
- APREO SEM
 - EDS, EBSD

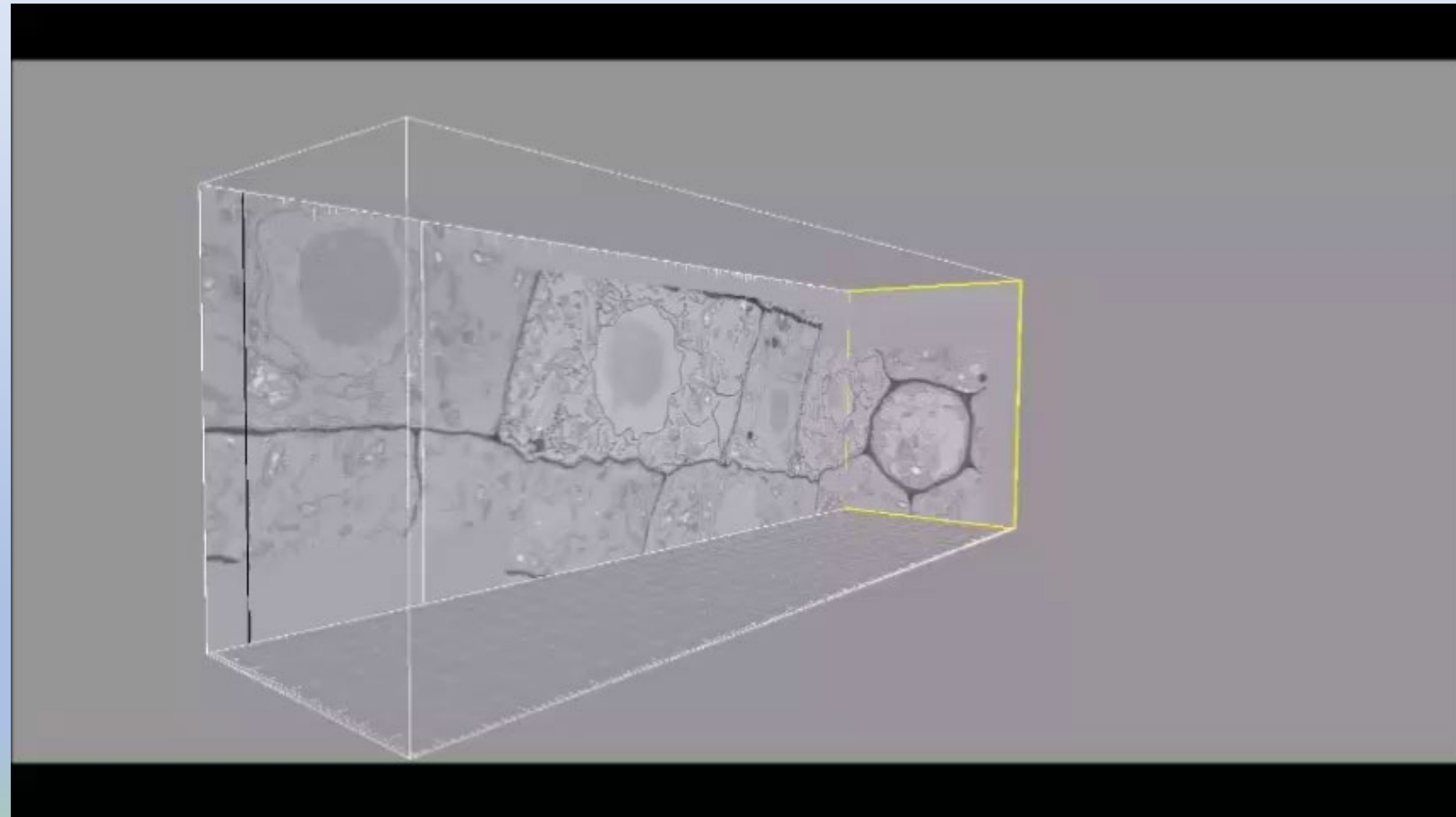
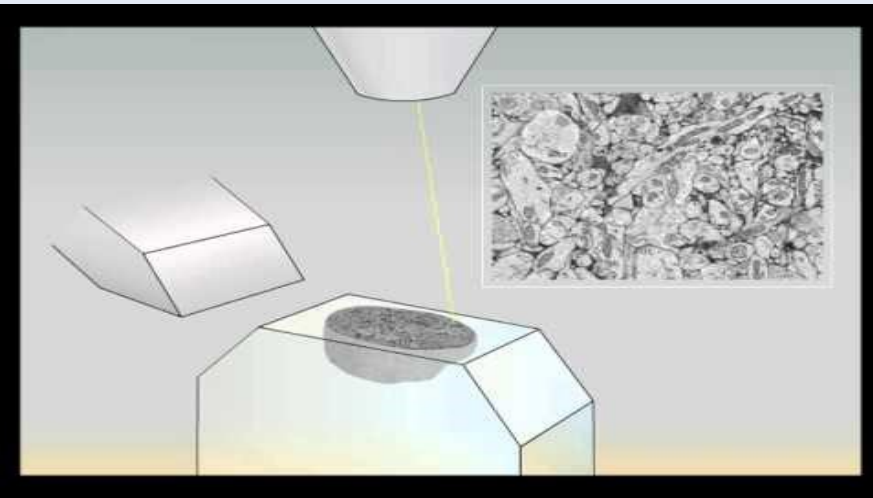


- Microtomes
- High Pressure Freezer
- Critical Point Dryer
- Freeze Dryer
- Sputter Coater
- EM grade Microwave
- Resin Ovens
- Hoods
- Image Analysis Workstations



TXRF for elemental analysis

New SEM (**VolumeScope**) with low vacuum mode, EDS, EBSD and Serial Block Face Imaging



Fee structure

- Hourly charges (~\$50/h) for details see <https://fmic.wsu.edu>
- Club membership (currently 1250/year and person)

Support

- Director Michael Knoblauch (0.25 FTE)
- 2 full time PhD level staff members
- 2 TA during the semester